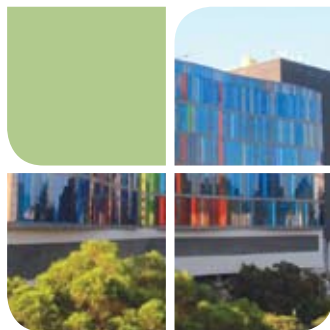


University Facilities and Services



4. Information Security

ITSC has set up an anti-spam and anti-virus gateway to protect the University E-mail system against attacks. Students could also get good practices in Information Technology to safeguard their personal information, such as how to securely manage their mobile computing devices and removable storage media, protect their computers from virus attacks, use a CUHK digital certificate to sign and encrypt e-mail messages etc.

5. A Connected Campus

The whole campus, including classrooms, student hostels, teaching blocks, academic and administrative buildings, are connected to the University Campus Backbone Network via high speed 10 Gigabit or Gigabit Ethernet links.

Besides, the campus network

- is linked to the Hong Kong Internet eXchange (HKIX), the most popular Internet Exchange in Hong Kong managed by ITSC, via Gigabit Ethernet links, thus providing University staff and students with the fastest access to local websites and many research centres.
- is also linked to the Hong Kong Academic and Research Network (HARNET), a local research network aiming at providing the local academic community with high-speed connectivity to the commodity Internet, China Education and Research Network (CERNET) and Trans-Eurasia Information Network (TEIN3) backbone, and
- has gigabit connections with the Chinese Science and Technology Network (CSTNET) of Chinese Academy of Sciences (CAS), China Next Generation Internet (CNGI), Academia Sinica Computing Center (ASCC), Academia Sinica Grid Computing (ASGC), Korea Research Environment Open NETWORK (KREONET2) and Asia-pacific Advanced Network (APAN-JP) of Japan through Hong Kong Internet eXchange (HKIX).

a. On-Campus Connections

Network ports are available in all classrooms and student hostel rooms. Students can bring their own computers and get connected to the network via a gigabit or 100M network connection at any time. In addition, students can also use the wireless network access at college student canteens, major lecture theatres and most outdoor areas on campus.

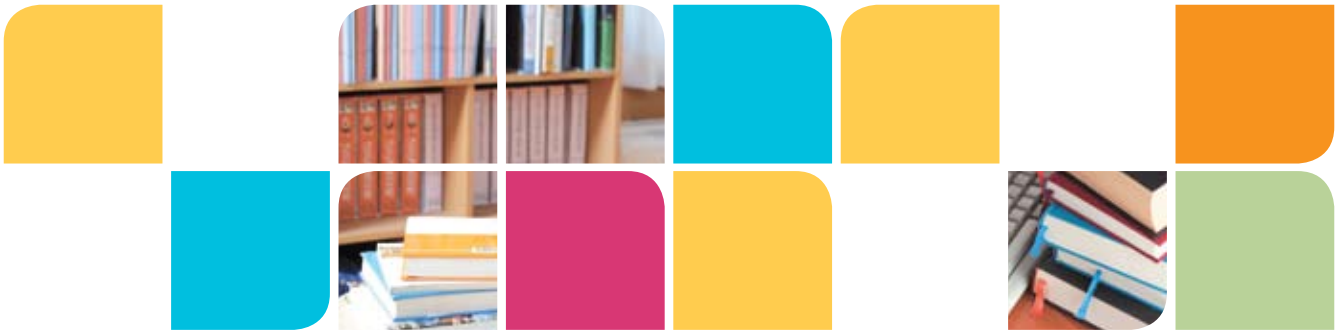
b. Off-Campus Connections

Off-campus users can connect to the campus network either through their commercial broadband service provider using a virtual private network (VPN) connection. Under a partnership programme, University staff and students can also enjoy free Wi-Fi Internet access at the hotspots throughout Hong Kong and in many overseas universities.

6. Contact Us

For further information, please contact the ITSC by:

Website	: www.cuhk.edu.hk/itsc
Electronic HelpDesk	: http://helpdesk.itsc.cuhk.edu.hk
Fax	: 2603 6098
Phone	: 2609 8845 (Technical Services Division)
	Monday - Thursday 08:45-13:00 14:00-17:30
	Friday 08:45 -13:00 14:00-17:45
	Except Public Holidays



Cultural / Recreational / Sports Facilities

The Sir Run Run Shaw Hall

With a seating capacity of 1,438, the Sir Run Run Shaw Hall is a professionally equipped auditorium suitable for holding ceremonies, assemblies, meetings, lectures and examinations, and for staging concerts, drama and dance performances, film shows and exhibitions. Temporary studio arrangement is possible on request. For details of booking and the application form, please visit the Hall's website at www.cuhk.edu.hk/srrsh or call 2609-7523.

Office of the Arts Administrator (OAA)

The Manager of Sir Run Run Shaw Hall is concurrently appointed as the Arts Administrator of the University. His duties include, in addition to the presentation of arts programmes, the promotion and coordination of campus-wide arts activities, and the provision of educational opportunities in the arts for the University's students in relation to their aesthetic development. *EMBARK*, a monthly Chinese University culture and arts calendar published by the Office of the Arts Administrator, is mailed to all departments, units, and is obtainable at student hostels and canteens, and other prominent spots on campus. Copies of the *EMBARK* can be mailed to individuals on request. The electronic version of *EMBARK* and related information are available at the Office of the Arts Administrator website: www.cuhk.edu.hk/cuoaa.

Sports Facilities

To promote student interest in physical education, the University provides a variety of sports facilities, including 2 sports fields, 3 gymnasias, a swimming pool, 13 tennis courts, 6 squash courts, 4 weight training rooms, and a water sports centre.

The Sir Philip Haddon-Cave Sports Field, provides a 400-metre all weather track, a soccer pitch, and an archery practice field. The Lingnan Stadium Sports Field provides an all weather jogging track, a soccer pitch, 6 basketball courts, 2 handball courts and a volleyball court. Both sports fields provide covered spectator stands and flood-light facilities. Each of the three indoor gymnasias (New Asia, United and University) houses badminton courts/basketball/volleyball courts. Table-tennis room/dance studio and fitness room are located near to each gymnasium. On the Shaw College campus there are one multi-purpose hall and an outdoor basketball court. The Water Sports Centre is located on the Tolo Harbour shoreline and is open for staff, students and alumni.



University Facilities and Services



University Health Service

The University Health Service provides a comprehensive on-campus medical, dental and health promotion service to full-time students, staff, and dependants of staff. There are 7 full-time physicians, 5 dental surgeons and 2 dental hygienists. The health clinic is equipped with a minor operating theatre, dispensary, medical laboratory and physiotherapy unit, to provide primary medical and dental care services. For the appropriate and more serious medical conditions, referrals to specialists can be arranged.

The Health Education Unit organizes regular talks, student activities, awareness campaigns, vaccination programme, and also advises on the special needs of disabled students.

The Dental Unit provides both preventive and curative services, as well as dental prosthesis.

Appointments can be made via the telephone, internet or in person. Basically, the medical and preventive service is free of charge. The Dental Unit charges a nominal fee.

Medical Clinic

Appointments : 2609-6439

Enquiries : 2609-6422

Internet booking : www.uhs.cuhk.edu.hk

UHS Homepage : www.cuhk.edu.hk/uhs

Dental Unit

Appointments / enquiries : 2609-6412

In case of emergency, members of the University should seek prompt treatment at the Accident and Emergency Department of Prince of Wales Hospital in Shatin or any Hospital Authority hospital. To call an ambulance, please dial 2735-3355 or 999.

Postgraduate Halls

The Postgraduate Halls (PGH) consist of six buildings: the Jockey Club Postgraduate Hall (PGH 1), Chiang's Building - PGH 2, Inter-University Hall (IUH) - PGH 3 and Halls No.4 to No.6, offering about 1,000 hostel spaces in total (around 70% of hostel places are allotted to existing residents and the remaining 30% to new applicants). As demand is greater than the total number of hostel spaces, **hall accommodation is not guaranteed. Non-local students should apply for hostel places before arrival to Hong Kong.**

Please visit the PGH website at www.pgh.cuhk.edu.hk for up-to-date information, including hostel fees, application period and procedures.

