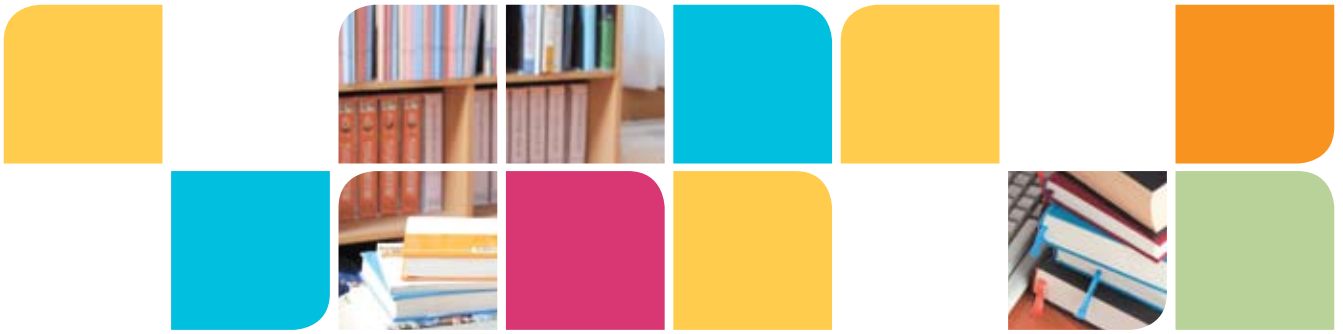




Introduction

The Chinese University of Hong Kong, incorporated in October 1963 under the Hong Kong Ordinance, is a bilingual and bicultural institution of higher learning. Its objectives are to (i) assist in the preservation, dissemination, communication and increase of knowledge; (ii) provide regular courses of instruction in the humanities, the sciences, and other branches of learning of a standard required and expected of a university of the highest standing; and (iii) stimulate the intellectual and cultural development of Hong Kong and thereby assist in promoting its economic and social welfare.





The University has its origin in three post-secondary colleges: New Asia College (founded 1949), Chung Chi College (founded 1951), and The United College of Hong Kong (founded 1956). In December 1976 a new ordinance was enacted, making important changes in the constitution governing the University and its constituent colleges. An ordinance for the fourth college - Shaw College - was enacted in July 1986. Shaw College began to admit students in 1988. In May 2006, the University Council decided to establish two new colleges: Morningside College and S.H. Ho College. In May 2007, the University Council decided to establish two more colleges: C.W.Chu College and Wu Yee Sun College. Then in October 2007, the University Council further decided to establish the Lee Woo Sing College. It is expected that all five new colleges will be ready for full operation before 2012.

A wide range of full-time undergraduate programmes leading to the BA, BBA, BChiMed, BEd, BEng, LLB, BMedSc, MB ChB, BNurs, BPharm, BSc and BSSc degrees are offered by various departments under the Faculties of Arts, Business Administration, Education, Engineering, Law, Medicine, Science, and Social Science. There is also a part-time degree programme leading to the degree of BEd.

Postgraduate programmes leading to the degrees of DMus, DNurs*, EdD, PhD, PsyD, JD, LLM, MA, MAcc, MArch, MBA, MChiMed, MClinPharm, MDiv, MEd, MFA, MFM, MMus, MNsc*, MNurs, MOM, MPacc, MPH, MPhil, MSc, MSSc, MSW, to postgraduate diplomas and postgraduate certificates are offered by the Graduate School through various graduate divisions.

Since its inception, the University has adopted bilingualism and biculturalism as the basis of its teaching, giving equal

emphasis to both Chinese and English, Eastern and Western cultures. The majority of the teaching staff are bilingual (Chinese and English) and have studied and/or taught in major universities all over the world. The University is international in outlook and enjoys close association with many universities, foundations and organizations abroad.

The total enrolment of the University as at 30 September 2009 was 23,237, of whom 11,958 were undergraduate students and 11,279 were postgraduate students.

The University has 25 research institutes to provide faculty members with financial support and other facilities for research. Under these institutes are a number of research centres. There are many more smaller research/consultancy units set up under the auspices of individual faculties and departments to promote research in various subject disciplines.



* Subject to Statutory amendment.

